

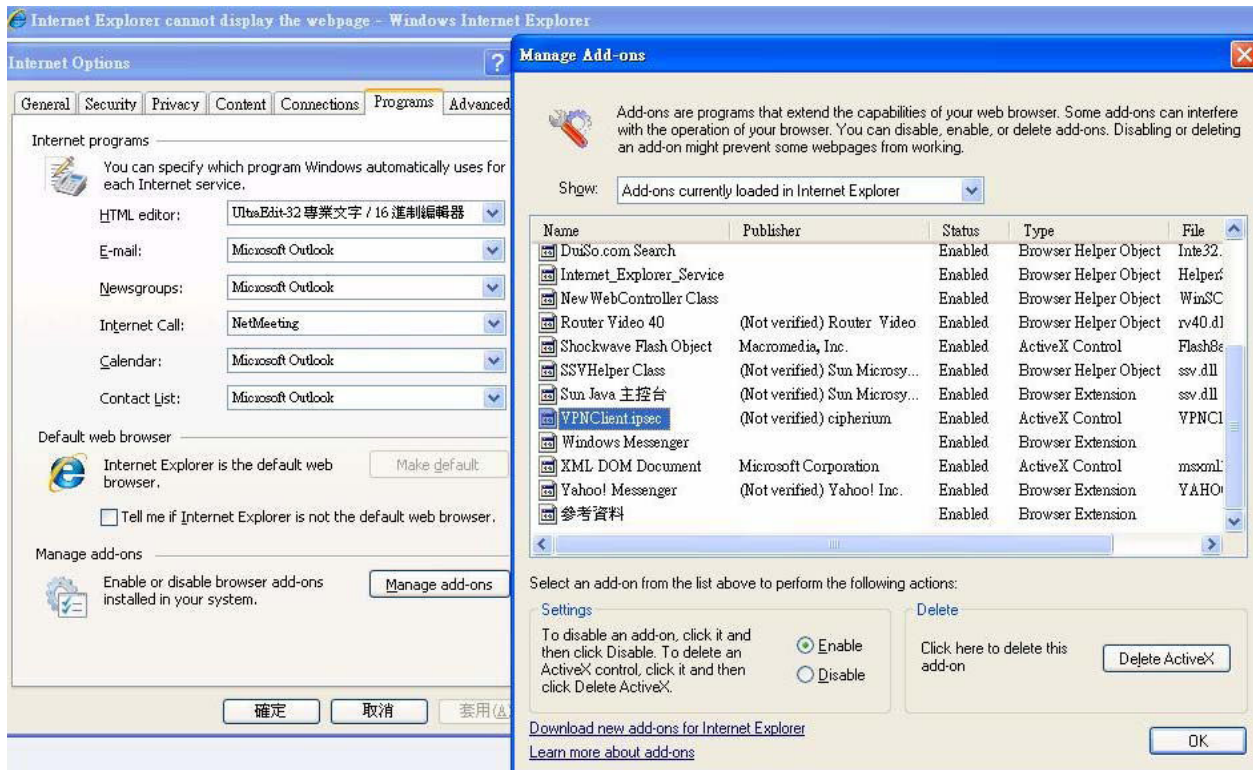
FAQ

HOW TO CONFIGURE IPSec VPN

The NAC is equipped with the IPSec VPN feature. Edimax implemented IPSec VPN tunneling technology between client's windows devices and the NAC itself, via wired or wireless LAN.

No extra client software is needed, except ActiveX. At the end of this setup, a build-in IPSec VPN feature will be enabled.

1. Active X component



The active X is a software component running inside the Internet Explorer. The ActiveX component can be checked by the above screenshots. From Windows Internet Explorer, click "Manage add-ons" button inside "Programs" page under "Tools" to show the add-ons programs list. You can see VPNCClient.ipsec is enabled.

The first time when you log in the NAC, Internet Explorer will ask you (user) to download the Active X component of IPsec VPN. This ActiveX component when once downloaded, will run after you see the page " Login Success Page". The ActiveX component will help to setup the IPsec VPN tunneling between the client's device and the NAC. It will also check the validity of the IPsec tunnel between them. If the connection is down, the ActiveX component will detect the broken link and decompose the IPsec tunnel. Once the IPsec tunnel is built, any packet sent will be encrypted. Without connecting to the original IPsec VPN Tunnel, user or client device has no alternative to gain network connection beyond this. The design of the NAC's IPsec VPN feature directly solves possible data security leak problem between client and the controller via either wireless or wired connection.

2. Limitations

- a. Internet Connection Firewall of Windows XP SP1 is not with IPsec control. It shall be turned off to allow IPsec packets to pass through.
- b. Without patch, ICMP (Ping), and PORT command of FTP, it will not be able to work in Windows XP SP2.
- c. The forced termination through CTRL+ALT+DEL, and Task Manager will stop the running of the Active X.

3. Internet Connection Firewall

Windows XP SP1's internet connection firewall is not compatible with IPsec. Internet connection firewall will drop the packets from tunneling of IPsec VPN.

