



How to auto-connect with PS-1206MF for printing.

This FAQ is applied to the following models and Windows versions:

Edimax: PS-1206MF and PS-1206MFg only

Windows OS: 98SE / 2000 / XP

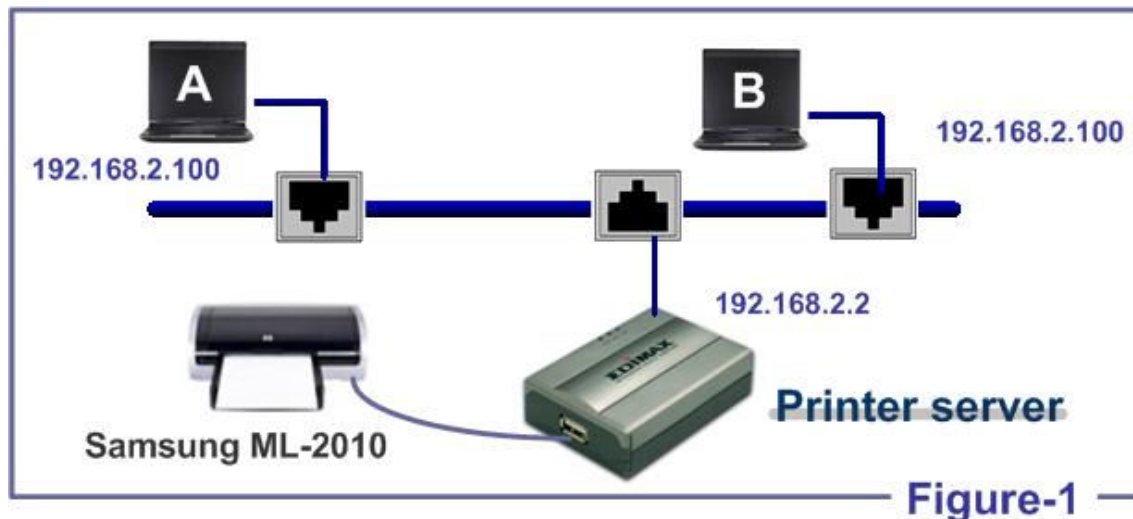
Printer: non all-in-one printers (non-multifunctional printers)

Introduction:

For sharing printers linked to the PS-1206MF(g) automatically, user must add the MAC address of the PS-1206MF(g) into the “auto connect list” tab in our software, which is the MFP Server Control Manager.

As printer classifications are concerned, only two kinds of printers are available: **Non-all-in-one printer** and **all-in-one printer**. For Non-all-in-one printer, every PC is allowed to send the printer job at the same time. For all-in-one printer, only one PC (PC-A) can send the print job after it gains control over the printer server manually; while the other PCs can not print until that PC (PC-A) release the control.

We will introduce how to overcome this drawback. We assume that you already have installed the shipping software successfully and there is an all-in-one printer, Samsung ML-2010 attached to the PS-1206MF(g) in Figure-1.



Step by Step:

Step 1 : Click the tab, “Auto connection List” as displayed in the Figure-2.

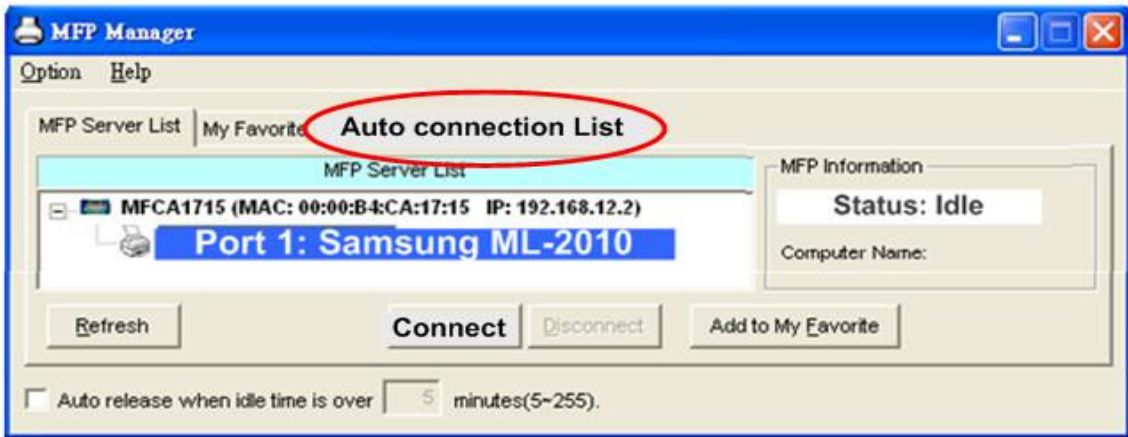


Figure-2

Step 2 : Click "Add" as displayed in the Figure-3.

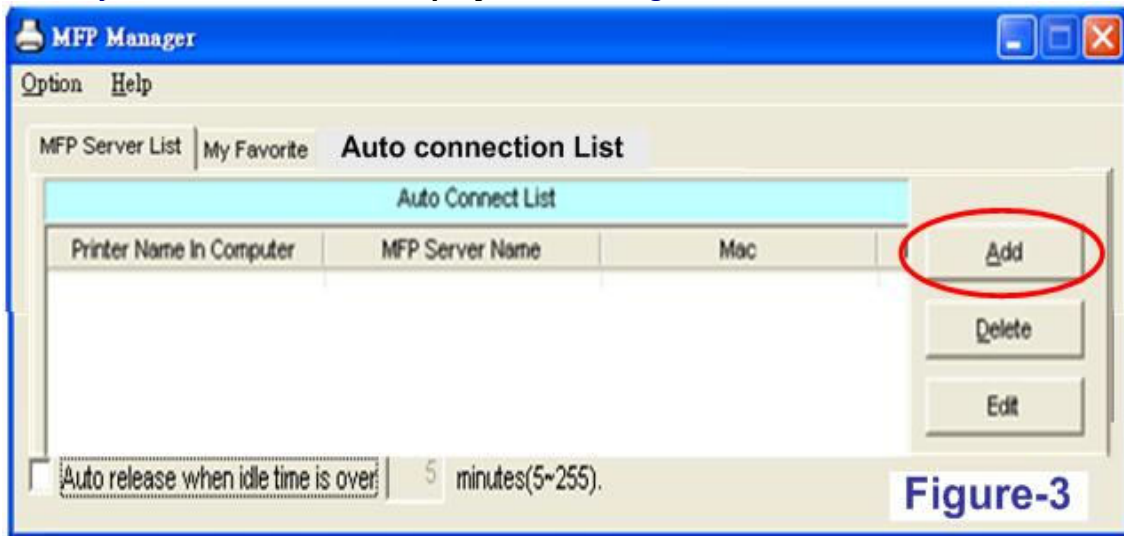


Figure-3

Step 3 : Click the "Samsung ML-2010" in the drop-down menu (Figure-4). and click "ok" button.

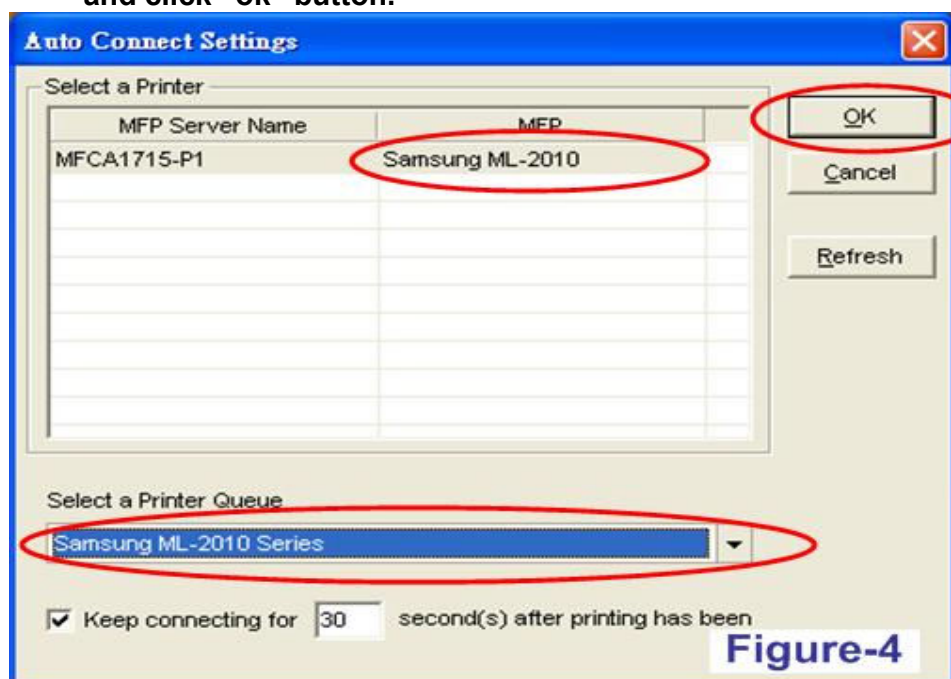
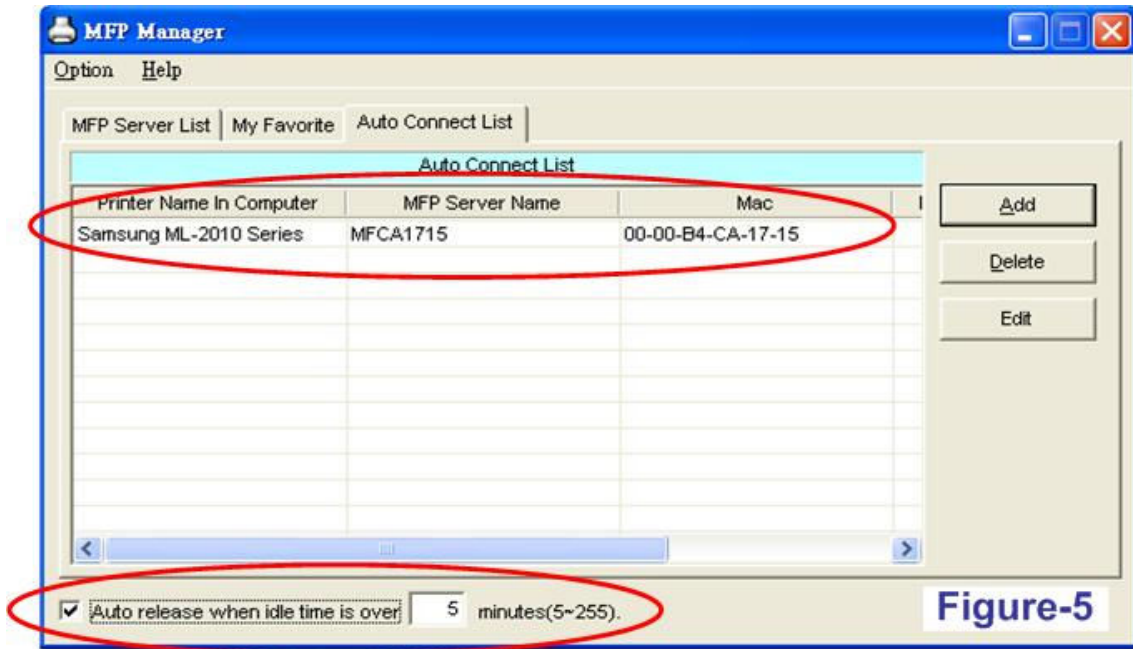


Figure-4

Step 4 : Check the “Auto release when idle time is over 5 minutes (Figure-5)



**All configurations are complete. Redo the steps again for PC-B.
Now PC-A and PC-B can forward the print job automatically.**