

How to configure the BR-6215SRg to share printers in Vista

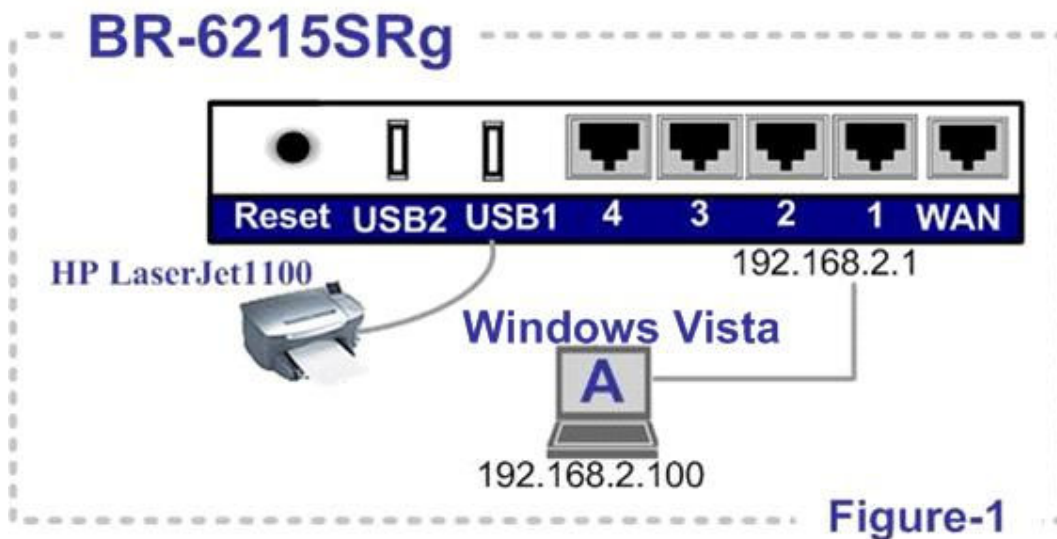
EDIMAX
Technical Support

This FAQ applies to the following models and Operation System:

- ▲ BR-6215SRg
- ▲ Windows Vista

Introduction:

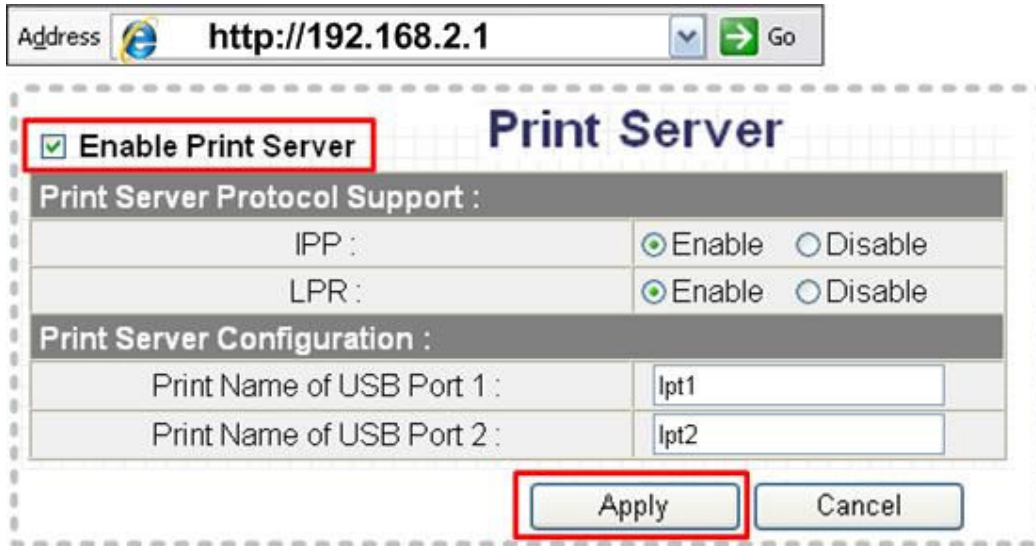
This is to help you configure your PC to share the printers connected to the BR-6215SRg. As shown in **Figure-1**. You will configure PC-A so that it can print with the printer, HP LaserJet 1100 (this printer is connected to the USB1 port of the BR-6215SRg).





Note: Not all printers are supported by the BR-6215SRg. Please use the printer using the printing language, "PCL". Generally speaking, the **all-in-one** printers will not be supported. (for all-in-one printers, please use the PS-1206MF or PS-1216u). Edimax will aim its best to verify supported printers as many as possible, and publish this information in the compatibility. However, printers not in the list may still work with BR-6215SRg.

Step by Step:

Step 1. Check “Enable Print Server”



Address  **http://192.168.2.1**  Go

Print Server

Enable Print Server

Print Server Protocol Support :

IPP :	<input checked="" type="radio"/> Enable <input type="radio"/> Disable
LPR :	<input checked="" type="radio"/> Enable <input type="radio"/> Disable

Print Server Configuration :

Print Name of USB Port 1 :	<input type="text" value="lpt1"/>
Print Name of USB Port 2 :	<input type="text" value="lpt2"/>

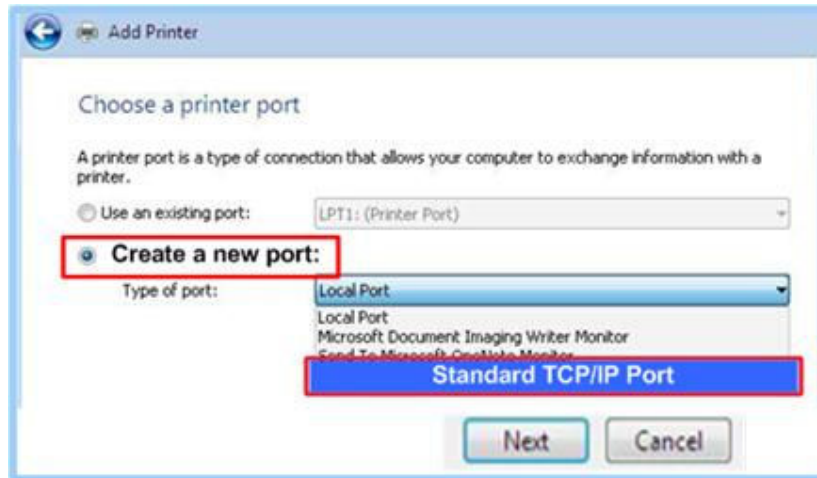
Step 2. Click **Start** and then **Control Panel**. Locate the **Printers** icon. Click the **Add A Printer** icon (as shown in the **Figure-2**). Click “ **Printers and Faxes**”.



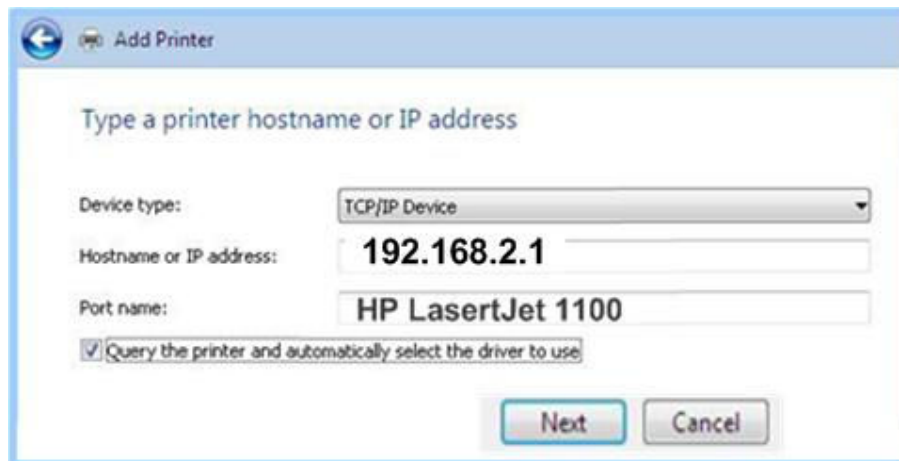
Step 3. Click “ **Add a local printer**”



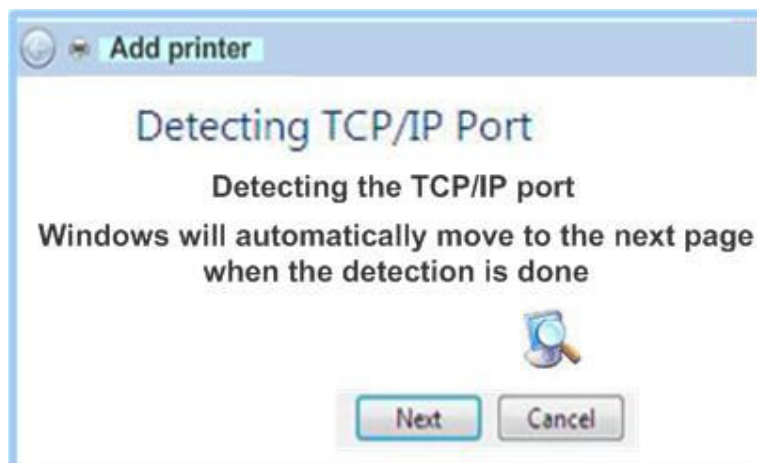
Step 4. Click “**Create a new port**” , and select “**Standard TCP/IP Port**” for the port type. Click “**Next**”.



Step 5. Choose “**Standard TCP/IP Device**” in the drop-down menu of “**Device Type**”. Enter the IP address of the print server, **192.168.2.1**. (This is the default IP address of the Edimax print server) in the “**Hostname or IP address**” field. The “**Port Name**” field is just for reference purpose. You may enter what you prefer.



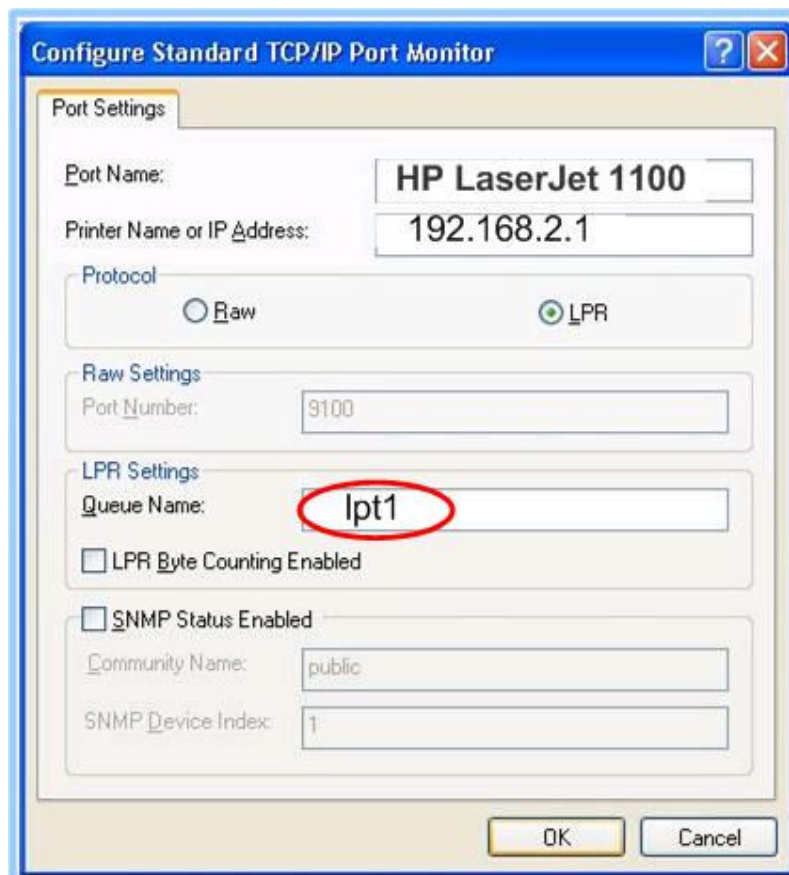
Step 6. Windows Vista is now trying to detect the printer.



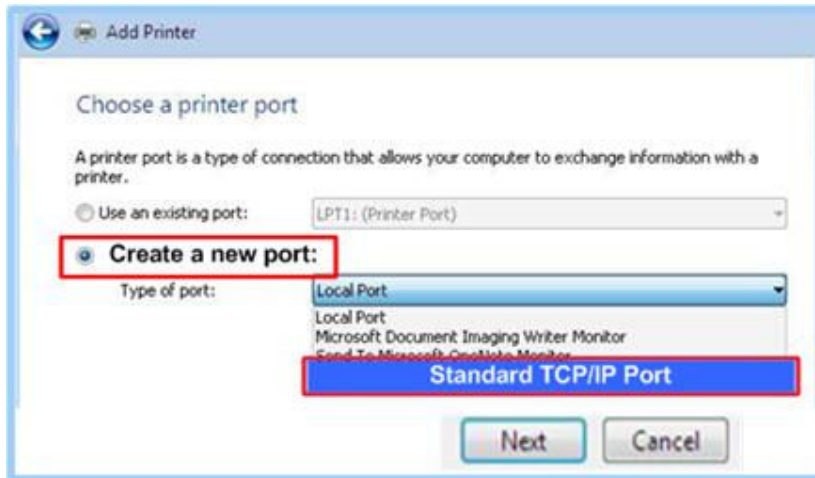
Step 7. Click **“Custom”** and then the **“Settings”** button



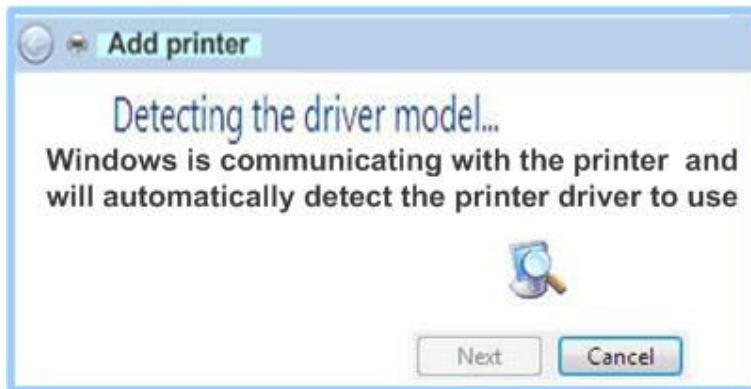
Step 8. Click the **“LPR”** button. Enter **“lpt1”**.



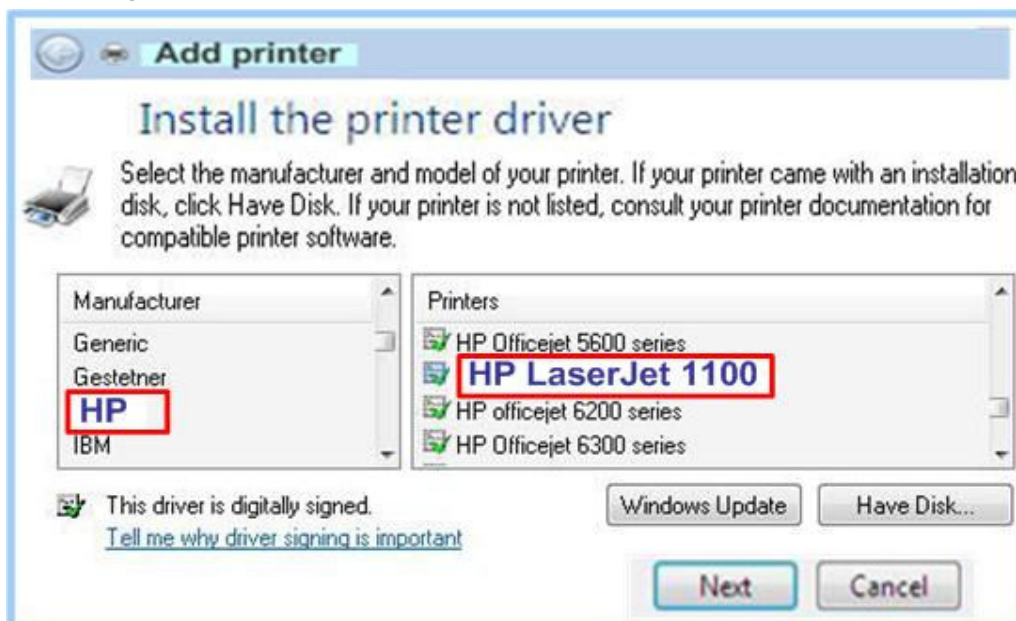
Step 9. Click **“Next”** to move on.



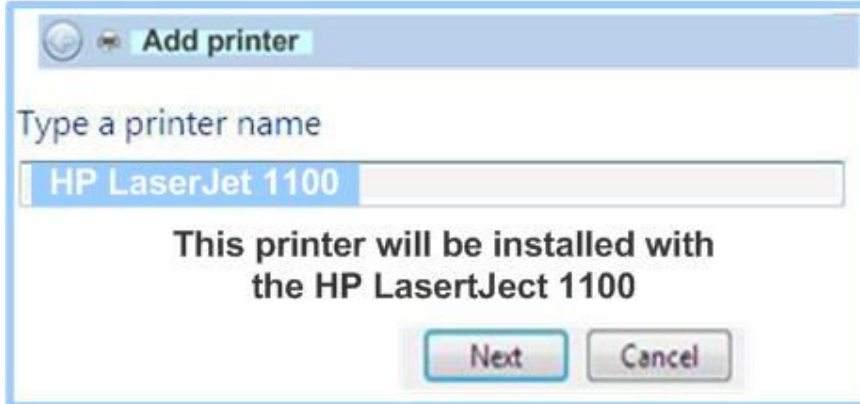
Step 10. Windows Vista will now attempt to detect and install the printer driver. You will be prompted to select a printer from a list of available printer drivers.



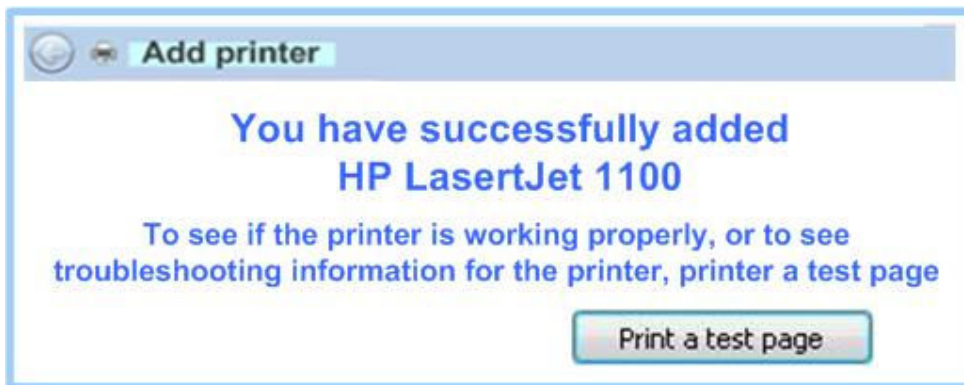
Step 11. Select your printer model and click “Next”.



Step 12. You will be prompted to enter the printer name. Enter your preferred name or just leave the default name unchanged. Click **“Next”**.



Step 13. Click “Print a test page” button, and see whether the paper is printed properly.



The configuration is complete. Please test whether your PC is able to print with the printer when connected to the USB1 port of the BR-6215SRg.