

How to configure the PS-2207U to share the printers



This FAQ applies to the following models and Operation System:

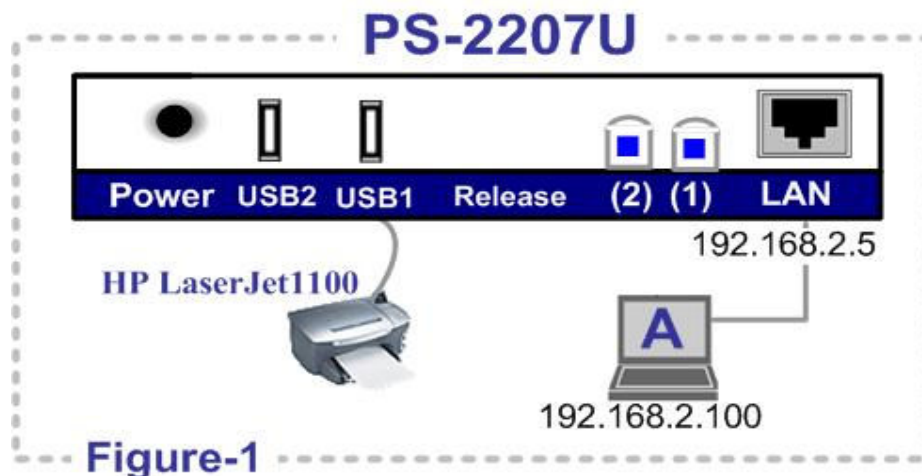
- ▲ PS-2207U
- ▲ Windows 2000 / XP

Introduction:

This is to help you configure your PC to share the printers connected to the PS-2207U/Uwg. As shown in **Figure-1**. We will guide you to configure the PC-A so that it can print with the printer, HP Laserjet 1100 (this printer is connected to the USB1 port of the PS-2207U).



Note: Not all printers are supported by the PS-2207U. Please use the printer using the printing language, "PCL". Generally speaking, the all-in-one printers will not be supported. (For all-in-one printers, please choose our model series PS-1206MF or PS-1216). Edimax will try its best to verify the supported printers as many as possible, and publish this information in the compatibility list (We will guarantee that the printers in the list will work with the PS-2207U). However, printers not in the list may still work with PS-2207U.

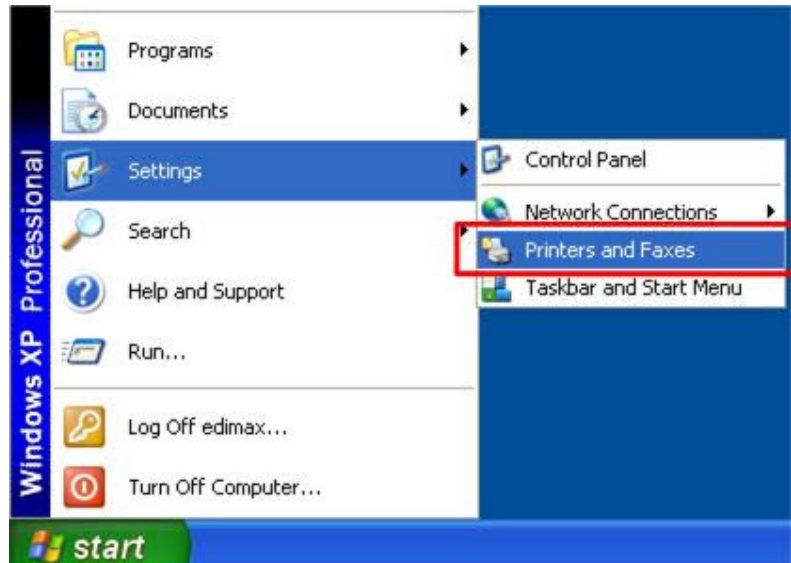


Step by Step:

Step 1. Enter 192.168.2.5 in your network browser, ensuring that the following page id will be displayed.



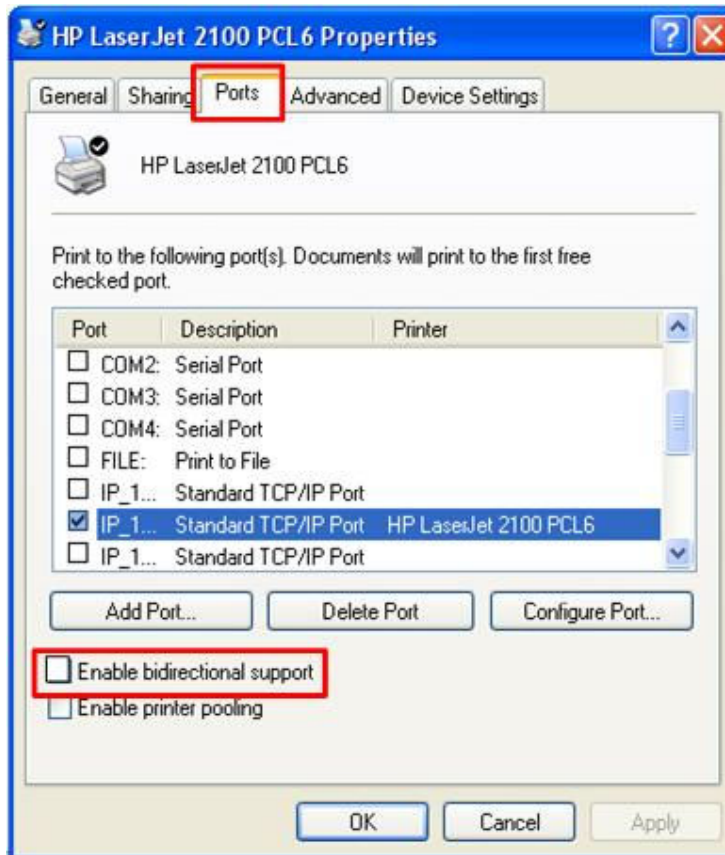
Step 2. Click “Printers and Faxes”.



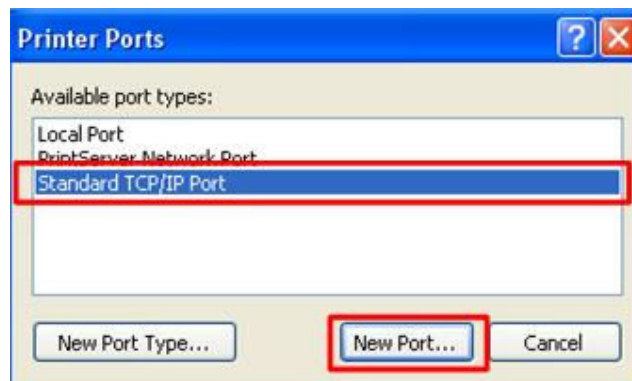
Step 3. Right-click the “driver icon’ (in this case, the printer in use is HP LaserJet 1100. Please use your own printer if your printer is other than this one.) Select “Properties”.



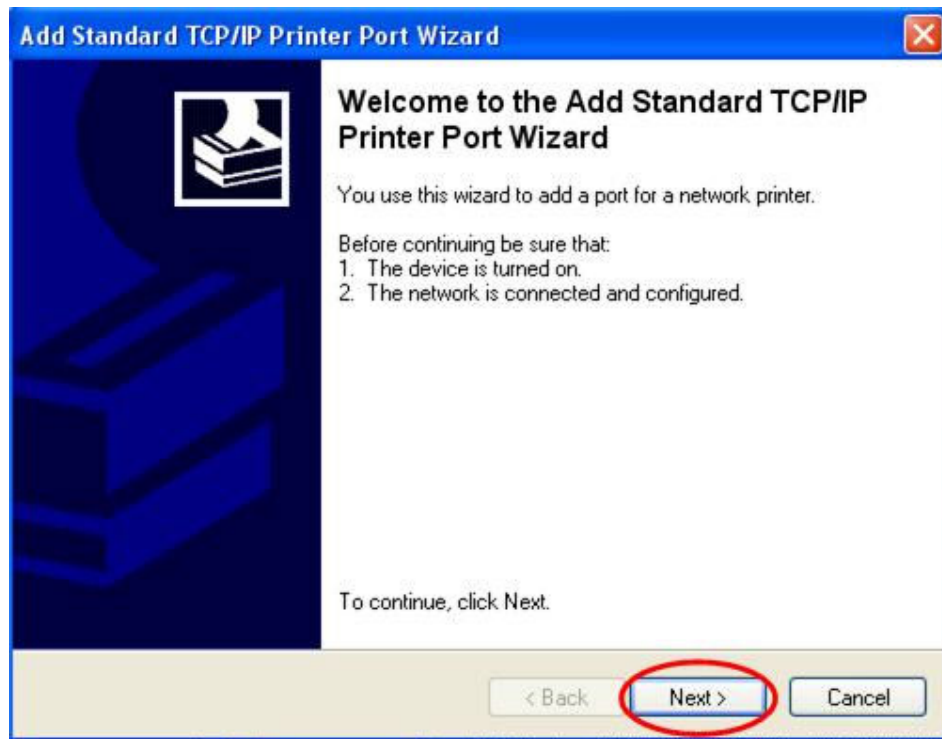
Step 4. Click “Port”, and uncheck the “Enable bidirectional support”.



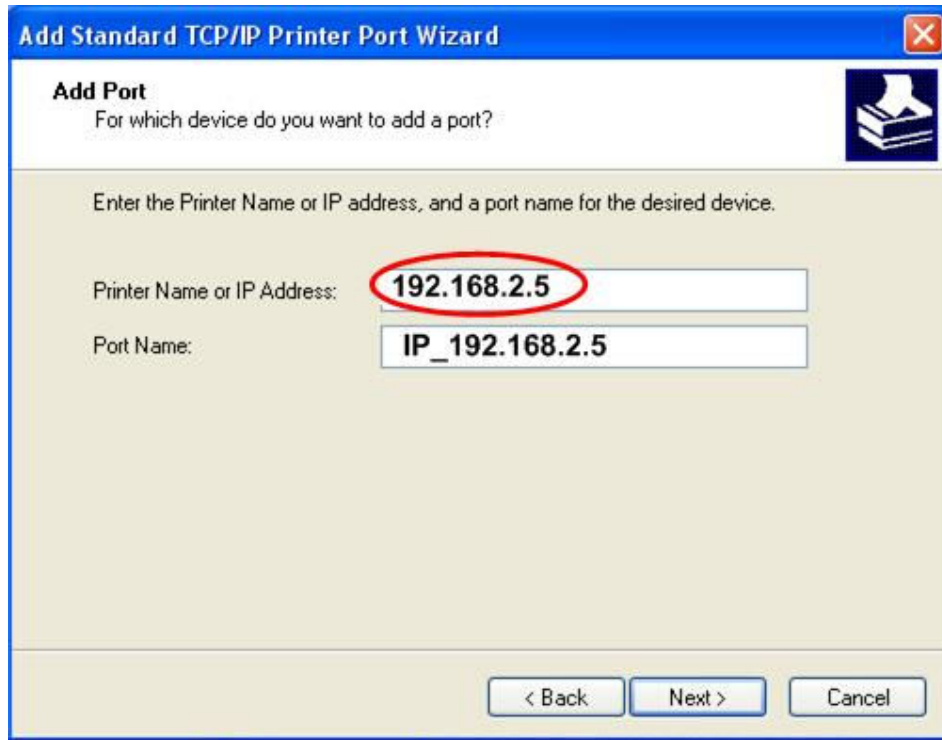
Step 5. Select “Standard TCP/IP port”



Step 6. Click “Next” button.



Step 7. Enter the default IP address of the PS-2207U, 192.168.2.5 into the field of the “Printer Name or IP Address”.



Step 7. Click “Settings”.



Step 8. Type “lpt1 “ in the “Queue Name” box, and click “OK”.

Configure Standard TCP/IP Port Monitor

Port Settings

Port Name: IP_192.168.2.5

Printer Name or IP Address: 192.168.2.5

Protocol

Raw LPR

Raw Settings

Port Number: 9100

LPR Settings

Queue Name: lpt1

LPR Byte Counting Enabled

SNMP Status Enabled

Community Name: public

SNMP Device Index: 1

OK Cancel

Step 9. Click "Next".

Add Standard TCP/IP Printer Port Wizard

Additional Port Information Required
The device could not be identified.

The device is not found on the network. Be sure that:

1. The device is turned on.
2. The network is connected.
3. The device is properly configured.
4. The address on the previous page is correct.

If you think the address is not correct, click Back to return to the previous page. Then correct the address and perform another search on the network. If you are sure the address is correct, select the device type below.

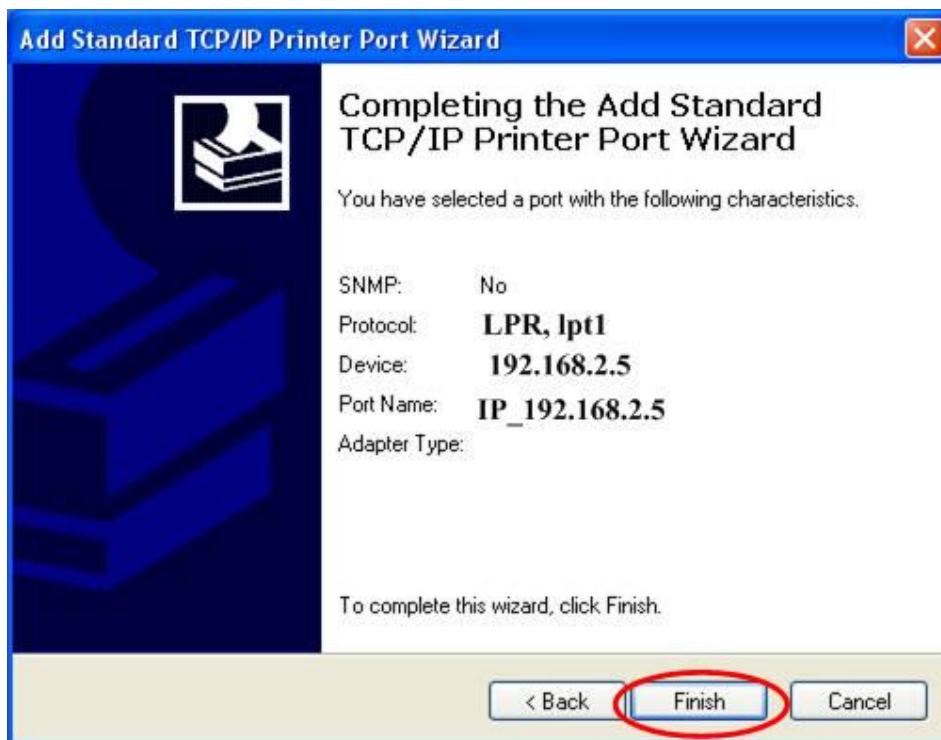
Device Type

Standard Generic Network Card

Custom Settings...

< Back Next > Cancel

Step 10. Click “Finish”.



The configuration is complete. Please test whether your PC is able to print with the printer connected to the USB1 port of the PS-2207U.