

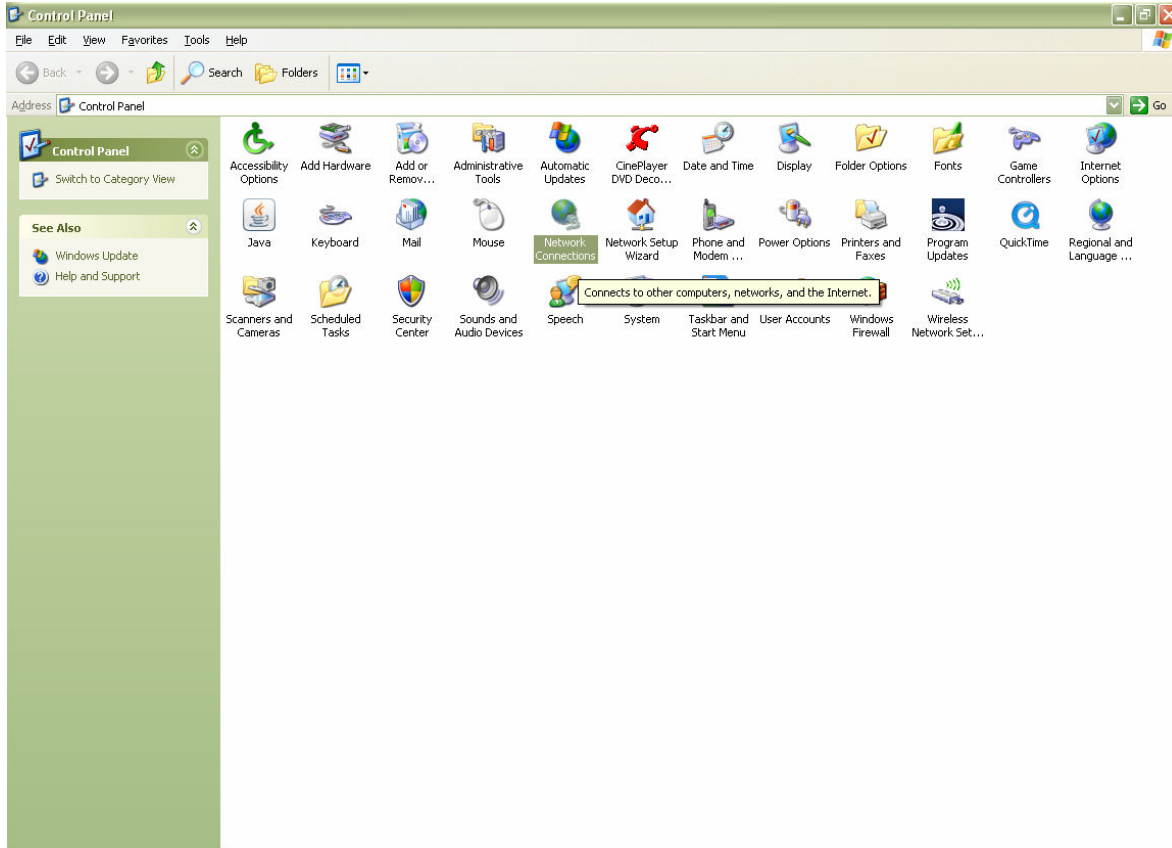


Frequently Asked Questions

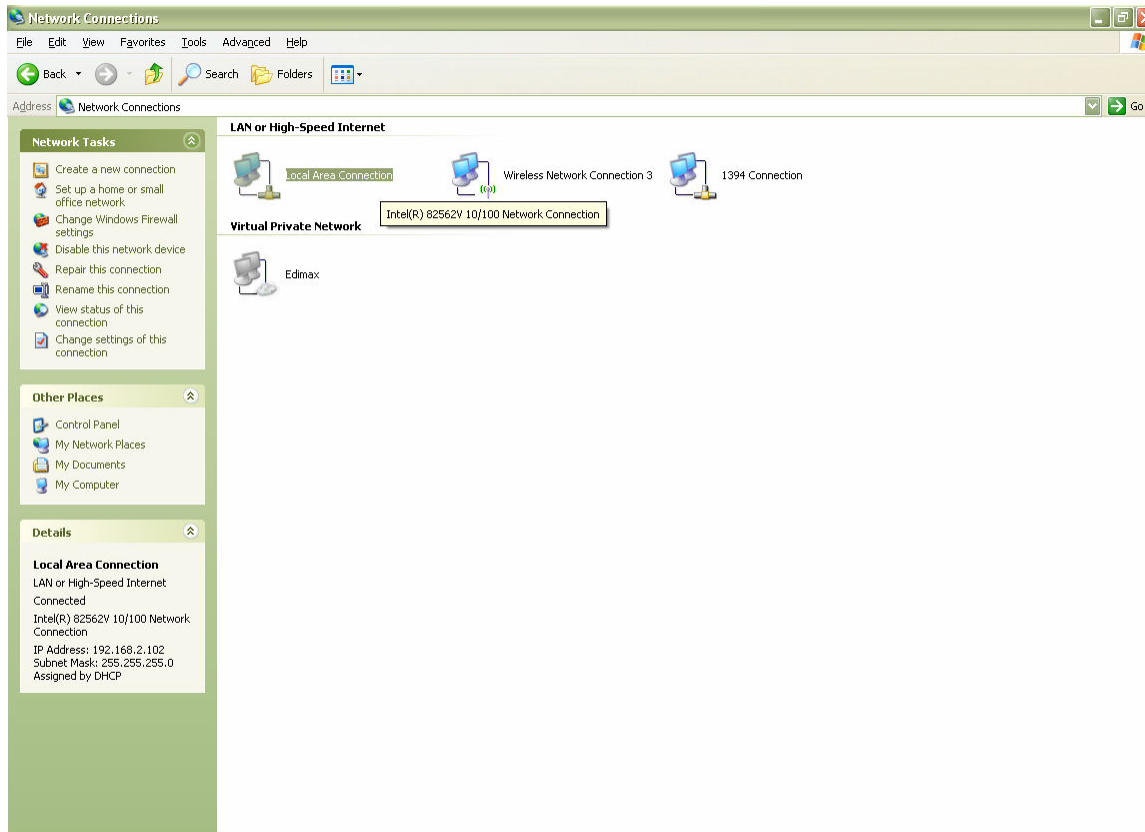
HOW TO CONFIGURE / GIVE YOUR PC A STATIC IP ADDRESS

Windows XP / 2000 / Vista:

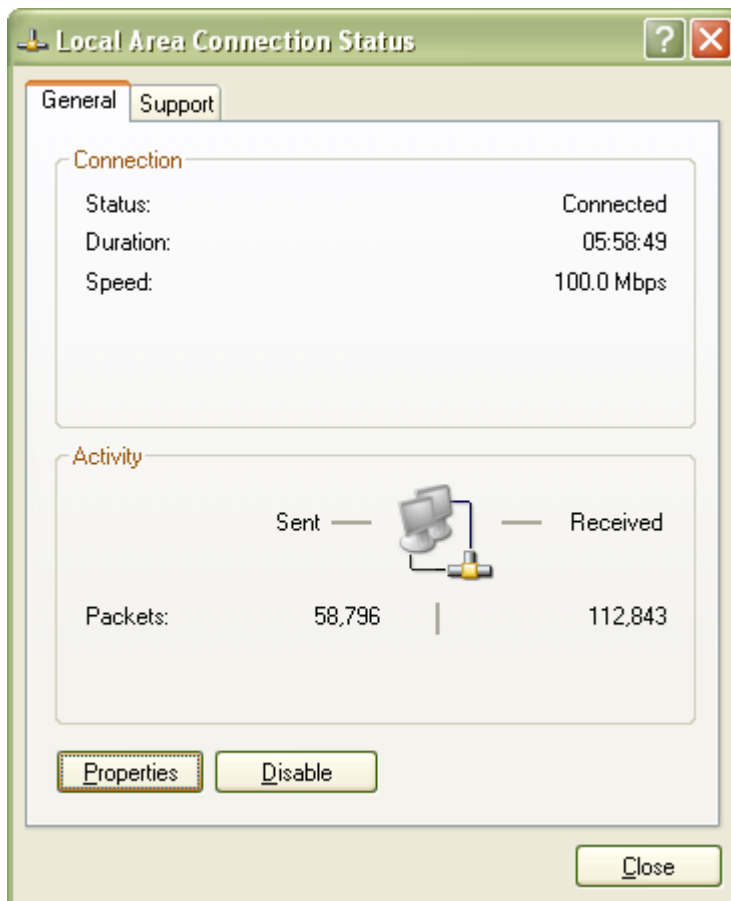
1. Click on Start -> Settings -> Control Panel



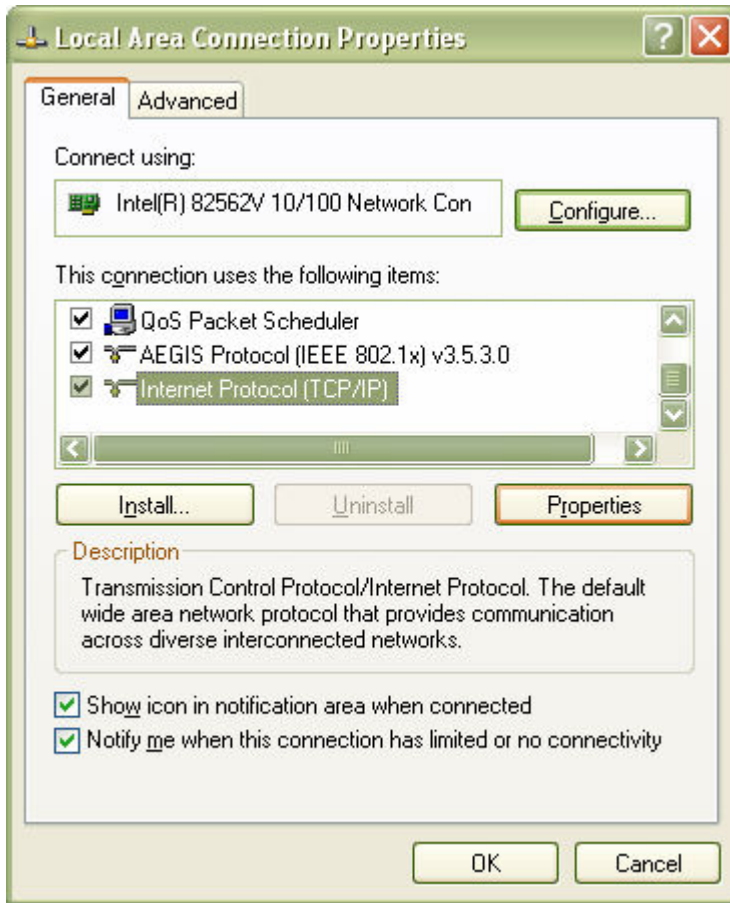
2. Click on Network Connections, and choose your LAN connection:



3. Double click, or mouse right click the icon and select properties:

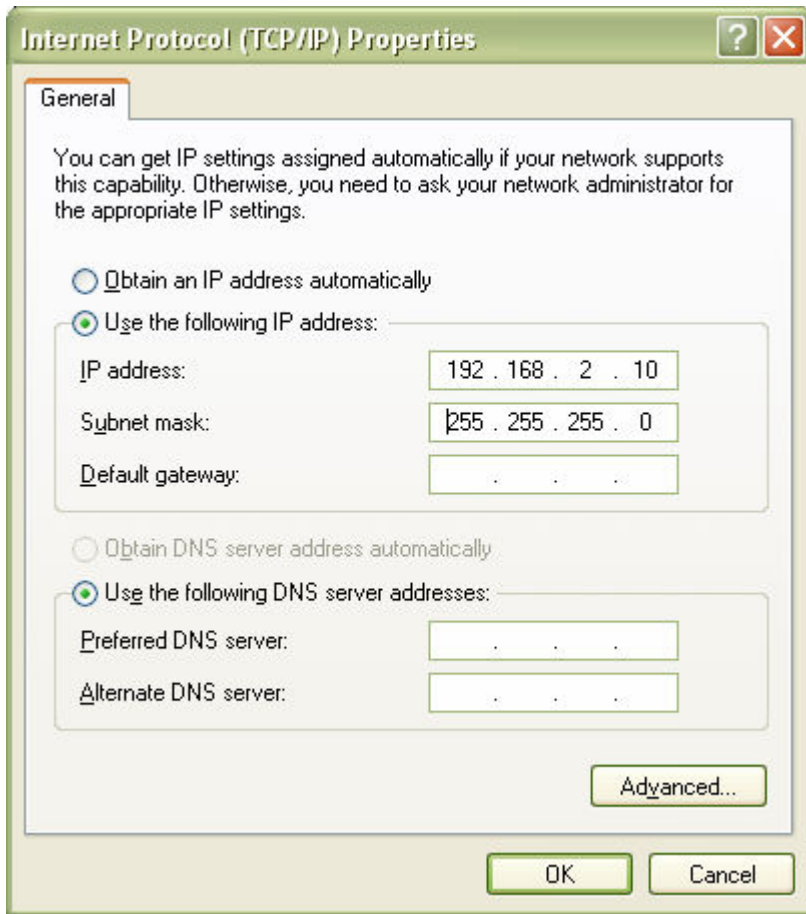


4. Select TCP/IP and go to Properties:



5. Select "Use the following IP address" and type the IP address and the subnet mask, which are two required fields when you enable this option.

You can type an unique IP address for each client networking device / computer using the range between 192.168.2.2 to .192.168.2.254



6. In the subnet mask, type 255.255.255.0. Click on OK and restart your PC when prompted.

Created : 09/01/2008
Author : Edimax EU

