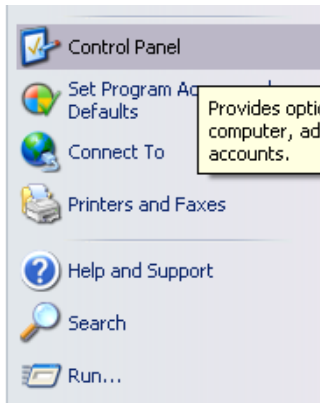


How do I set a static ip?

In order to set a static ip on your computer you need to follow this guide. At the end of the guide you are ready to run the firmware upgrade. When the upgrade is done you need to revert all changes to your computer so you will have a dynamic ip again.



Please click on **Start** and then on **Control Panel**.

After that you will get some more option.

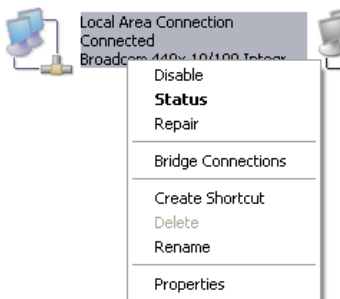


In the control Panel you need to click on **Network and Internet Connections**.



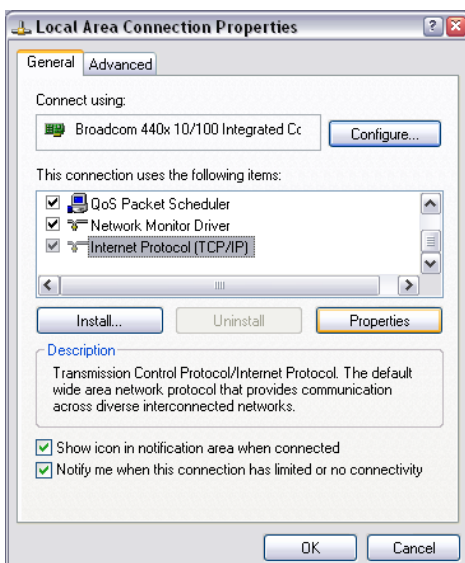
After that you need to click on **Network Connections**.

LAN or High-Speed Internet

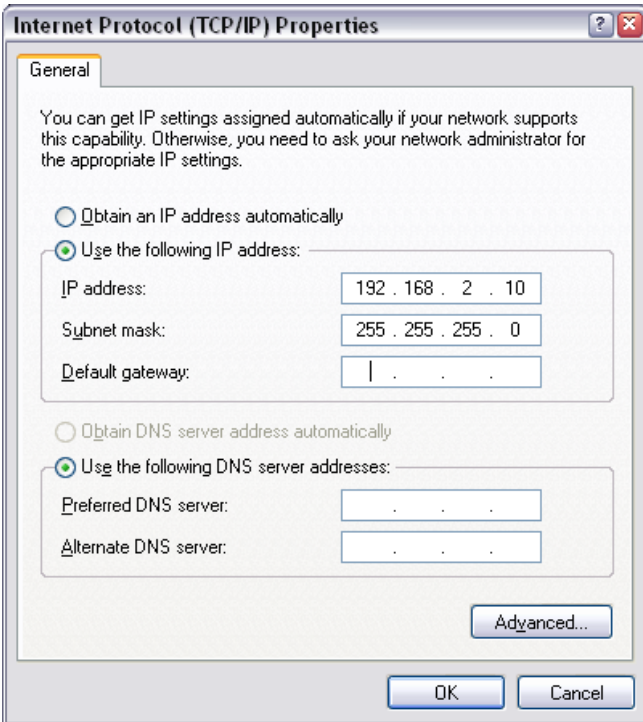


Then you will get a list with all your networks.

Please use the right mouse button on the LAN connection and select the option **Properties**.



In the list you need to select **Internet Protocol TCP/IP** and click on **Properties**.

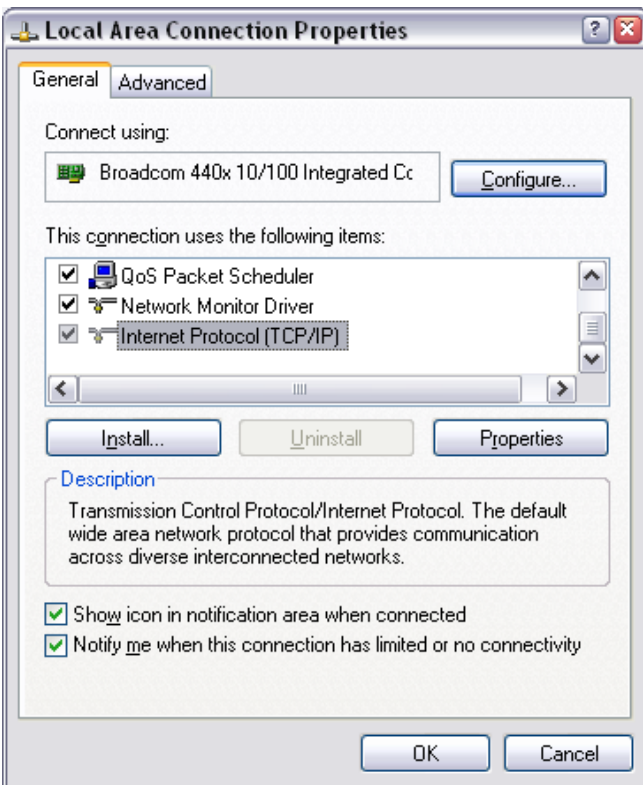


Here you need to enter the static ip. If you did not change any settings you can follow these.

IP: 192.168.2.10

Subnet Mask: 255.255.255.0

After you have filled this in you need to click on the **OK** button.



You will be returned to this screen.

All you have to do here is click on **OK**.

Windows will now save the ip address and activate it.

Your computer is now ready and you can start the upgrade process.

When you are done with the upgrade you need to set the ip back to dynamic.

In order to do that you need to follow the same steps as before but this time you need to select the option **Obtain an IP address automatically**, and at the bottom the option **Obtain DNS server address automatically**. Then click twice on **OK**. All settings are set back as they were before.